



FABRIC WALLCOVERINGS

This document must not be used for final color selection. Please request a color selector from your local Moderco distributor.



ALTAI



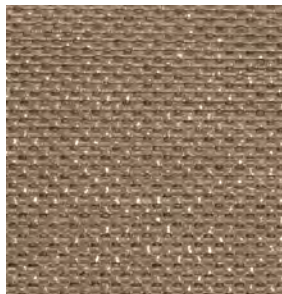
Phoron 116-12



Fresco 116-09



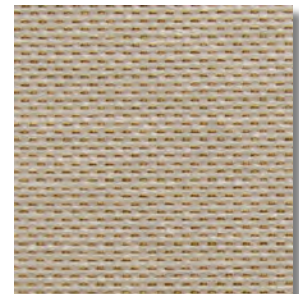
Portobello 116-06



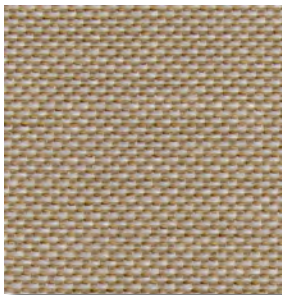
Latte 116-08



Greige 116-01



Warm Stone 116-02



Basket 116-03



Spice 116-04



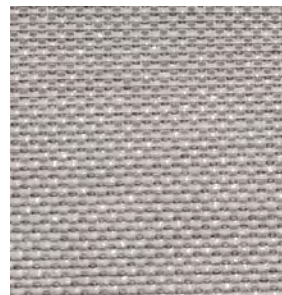
Rock 116-13



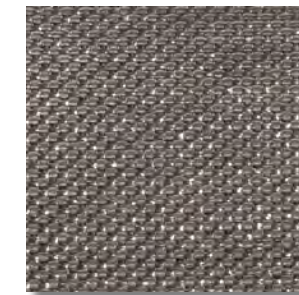
Coriander 116-11



Mirage 116-07



Triton 116-10

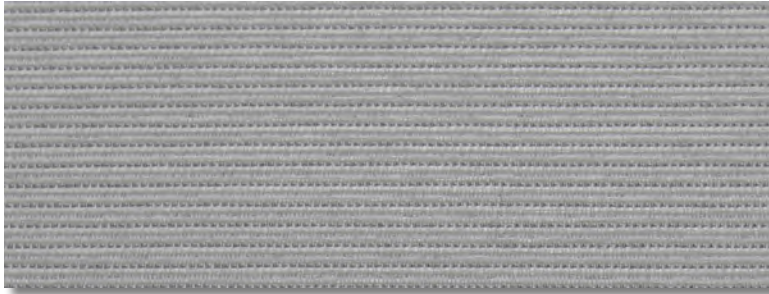


Metal 116-14

This document must not be used for final color selection. Please request a color selector from your local Moderco distributor.



AVALON



Ocean Grey 110-08



Grey Mist 110-07

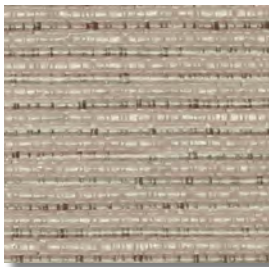


Ice Blue 110-05



Gardenia 134-02

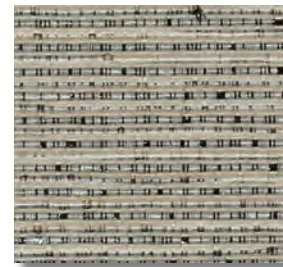
TIRANO



St. Tropez 111-02



Winter Beach 111-01



Riverstone 111-03



Blue Haze 111-10



Cape Cod 111-04

This document must not be used for final color selection. Please request a color selector from your local Moderco distributor.



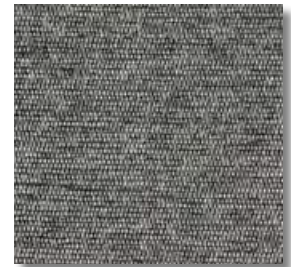
WOOLY



Smokey Marble 117-01



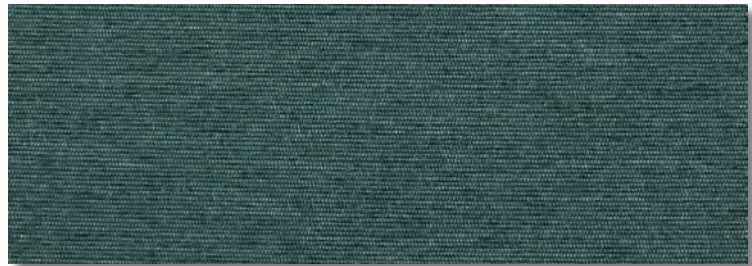
Vanilla Latte 117-02



Forged Steel 117-07



Dusky Grey 117-05



Marlin 117-10



Nickel 117-06

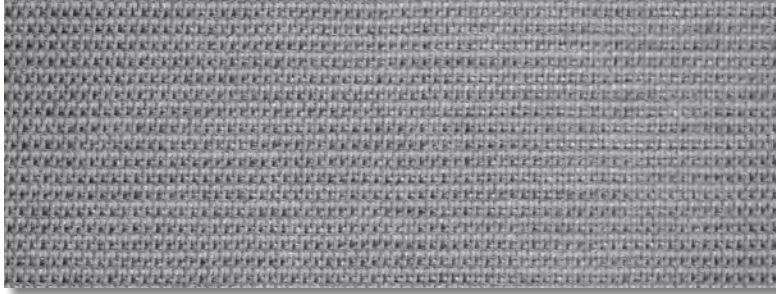


Iridium 117-08

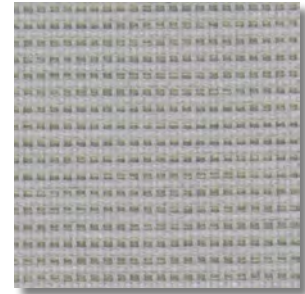
This document must not be used for final color selection. Please request a color selector from your local Moderco distributor.



STRATUS



Grey 39-34



Starlight 39-29



Discover 39-33



Parchment 39-24



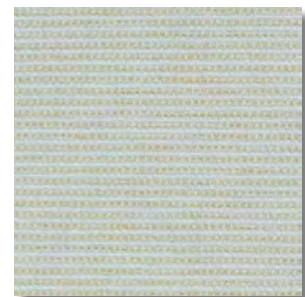
Agate 39-01



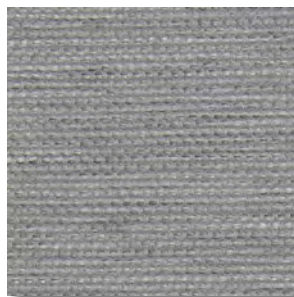
Casarina 39-26



Sand 39-17



Plaster 39-32



Silverado 39-30



Bahamas 39-27

This document must not be used for final color selection. Please request a color selector from your local Moderco distributor.



STRATUS



Truffle 39-22



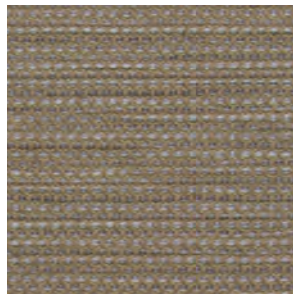
Olive Grove 39-25



Laguna 39-37



Gated 39-35



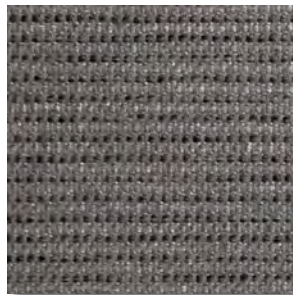
Iron Ore 39-12



Glacier 39-09



Wilderness 39-36



Armor 39-39



Graphite 39-10



Pepper 39-40



Element 39-38



Technical Data

	<u>Altai</u>	<u>Avalon</u>	<u>Tirano</u>	<u>Wooly</u>	<u>Stratus</u>
Contents	olefin/polyester	olefin/polyester	polyester	polyester	olefin/polyester
Weight (oz./lin.yd)	17	18	19	15	13
Backing	acrylic	acrylic	acrylic	acrylic	acrylic
Finish	Crypton®Wall	Crypton®Wall	Crypton®Wall	Crypton®Wall	Teflon®
Abrasion (cycles)	100,000	100,000	100,000	100,000	30,000
Flame Spread	20	20	20	20	20
Smoke Developed	50	50	50	50	50
Recycled Content (Post - Pre)	100% (26% - 74%)	43% (10% - 33%)	69% (20% - 49%)	57% (20% - 37%)	50% (0% - 50%)
Greenguard Gold	Yes	Yes	Yes	Yes	No

Flammability

All patterns meet Class A requirements in accordance with ASTM E-84.
 All patterns meet Corner Burn requirements per UBC 8-2/NFPA 265.
 Toxicity: MEA 279-90M

Colorfastness to light

All patterns Grade 4.0 minimum at 40 hours AATCC 16-A.

Abrasion Resistance

All patterns meet Heavy-Duty contract upholstery requirements per ASTM D4157-Wynzenbeek.

Wet & Dry Crocking

All patterns minimum Grade 3.0 AATCC 8.