



PREMIUM VINYL WALLCOVERINGS

This document must not be used for final color selection. Please request a color selector from your local Moderco distributor.



SLAB



Brutalist S322-55



Fountain S322-10



Portico S322-12



Raw S322-50



Plinth S322-80

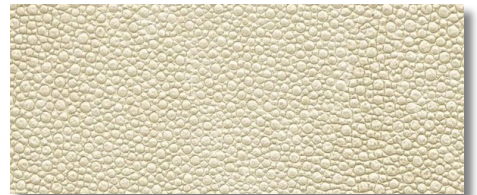


Terrace S322-57

TIBURON SHAGREEN



Angel U421-02



Candle U421-12



Fathom U421-79



Cosmos U421-99



Beach U421-15

This document must not be used for final color selection. Please request a color selector from your local Moderco distributor.



CROSS THE LINE



Commitment C822-90



Compassion C822-40



Connection C822-94



Harmony C822-81



Integrity C822-51



Intuitive C822-20



Longevity C822-18



Prosperity C822-50



Stability C822-25

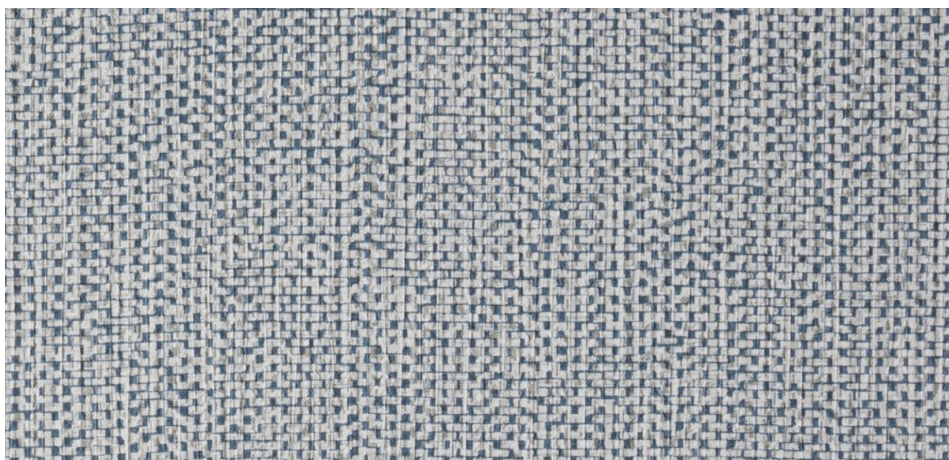


Confidence C822-92

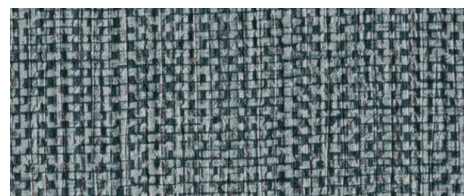
This document must not be used for final color selection. Please request a color selector from your local Moderco distributor.



HOUSE OF TWEED



Boathouse HT21-11



Bungalow HT21-13



Craftsman HT21-05



Creole HT21-14



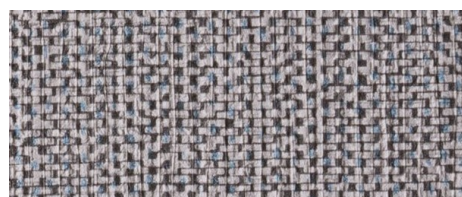
Empire HT21-12



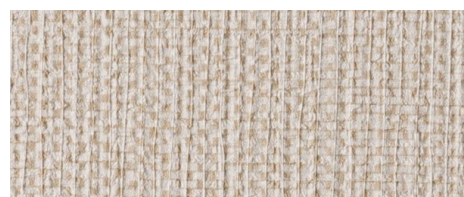
Highrise HT21-06



Mediterranean HT21-08



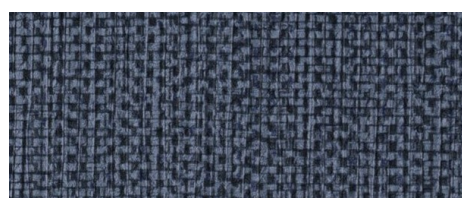
Modern HT21-01



Neoclassical HT21-10



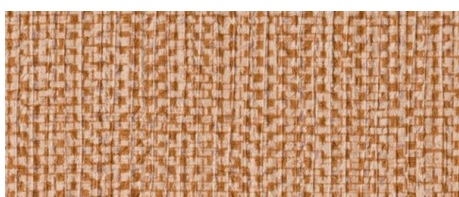
Revival HT21-15



Skyscraper HT21-16



Townhouse HT21-09



Villa HT21-03



Chalet HT21-07

This document must not be used for final color selection. Please request a color selector from your local Moderco distributor.



OTIS



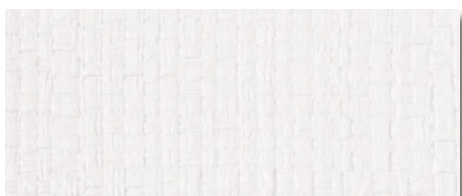
Bamboo T521-13



Banana Leaf T521-10



Cactus T521-07



Cloud T521-01



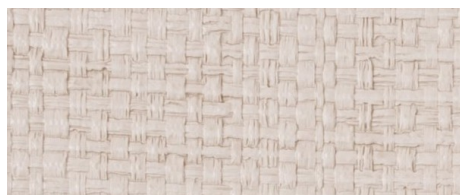
Dew Drop T521-11



Moonstone T521-05



Sweetgrass T521-14



Thassos T521-02



Twine T521-04



Blue Yonder T521-08



Technical Data

Total weight	20 oz./lin.yard
Backing	Osnaburg
Federal Spec	CCC-W-408A, Type II
CFFA Spec	CFFA-W-101-D, Type II
Fire testing	-NFPA 101, Life Safety Code -NFPA 255 (UL 723, CAN/ULC S102M) Tunnel Test, Class A -NFPA 286 Corner Burn Test, Meets requirements for Flame Spread and Smoke Developed -UL labeled and listed
Flame Spread	15
Smoke Developed	30
VOC	-Passed Test Protocol CA DHS Section 01350 for low VOC Emissions -Test Method CA/DHS/EHLB/R-174

Vinyl wallcoverings contain bactericides and mildew inhibitors to protect the product from microbiological and mildew growth.

Vinyl wallcoverings are manufactured Cadmium- and Mercury-free.

Within commercially acceptable tolerances, some variation of color may occur between dye lots.