



DEMOUNTABLE WALL SYSTEM

EXTANZA 300



EXTANZA 300 DEMOUNTABLE WALL SYSTEM

Glass partitions are revolutionizing interior design with their sleek and modern appeal. These versatile elements can be installed in various settings, from office spaces to schools, seamlessly blending functionality with aesthetic elegance.

Their clear, unobtrusive design provides a clean, uncluttered look, while their adaptability makes them suitable for any environment.

Additionally, glass partitions offer an architectural touch that can enhance the overall design of a room.

Their minimalist style complements various design themes, from contemporary to industrial, and adds a sophisticated edge to the space. Whether you are looking to divide a large office into smaller meeting rooms or create a stylish separation in a living area, glass partitions provide a refined solution that does not compromise on design.

DOORS OPTIONS

Our versatile demountable partition offers multiple door finishes (aluminum, glass or wood) and options (pivot, sliding or hinged) available in both single or double configuration. Each type can be seamlessly integrated with our range of products, providing customizable solutions to suit various design preferences and functional needs.



JOINTS

This glass partition features sleek, discreet fine joints of polycarbonate that seamlessly blend into its design. The minimalistic detailing ensures a clean, unobtrusive appearance, maintaining a refined, modern look.

We offer an alternative joint: aluminum posts between glass panels. These posts provide a distinct style and allow configuration changes.



SOLID PANELS

Our glass partitions can be paired with wood panels, available in double configurations, both horizontally and vertically. The separation between glass and wood is achieved with an optional visible or concealed aluminum post



EXTANZA 300

Models	321	322
STC	» Single glass: 32-38	» Double glass: 36-40
Glazing and Panels	<ul style="list-style-type: none"> » Single center » Thickness: 5/16" - 3/8" (8 mm - 10 mm) » Tempered, laminated or tempered laminated 	<ul style="list-style-type: none"> » Double » Thickness: 5/16" - 3/8" (8 mm - 10 mm) » Tempered, laminated or tempered laminated
Junctions	<ul style="list-style-type: none"> » Polycarbonate » Two face tape 	
Gaskets	» Available in black	
Electrical	» Not available	
Profile and Ceiling	For center and double glass <ul style="list-style-type: none"> » Thickness: 1 5/8" (41.3 mm) » Height: 1" (25.4 mm) 	
Doors	Glass Door, <ul style="list-style-type: none"> » Pivot Door 	

EXTANZA 300

Models	331	332
STC	<ul style="list-style-type: none"> » Single glass: 34-38 	<ul style="list-style-type: none"> » Double glass: 42-47 » Double panels: 50
Glazing and Panels	<ul style="list-style-type: none"> » Single: offset or centered » Thickness: 3/8" and 1/2" (10 mm - 12 mm) » Tempered, laminated or tempered laminated » Solid panels 1/2" and 5/8" (12 mm - 15.9 mm) 	<ul style="list-style-type: none"> » Double » Thickness: 3/8" and 1/2" (10 mm - 12 mm) » Tempered, laminated or tempered laminated » Solid panels 1/2" and 5/8" (12 mm - 15.9 mm)
Junctions	<ul style="list-style-type: none"> » Aluminium post » Polycarbonate » Two face tape » Available 3 directions and 90-degree corner » Glass and panel transom possible with post junction 	
Gaskets	<ul style="list-style-type: none"> » Available in gray, black and white 	
Electrical	<ul style="list-style-type: none"> » Wiring integrated in the aluminium possible 	
Profile and Ceiling	<ul style="list-style-type: none"> » Thickness: 3 1/2" (88.9 mm) » Height: 1 11/16" (43.2 mm) 	

EXTANZA 300

Models	331	332
Doors	<p>Glass Door</p> <ul style="list-style-type: none">» Sliding door» Hinged door» Pivot door <p>Wood Door</p> <ul style="list-style-type: none">» Hinge door» Sliding door» Solid core <p>Aluminium Door</p> <ul style="list-style-type: none">» Hinge door» Single glass» Thickness : 5/15" – 3/8" (8mm – 10mm)	<p>Glass Door</p> <ul style="list-style-type: none">» Sliding door» Hinged door» Pivot door <p>Wood Door</p> <ul style="list-style-type: none">» Hinge door» Sliding door» Solid core <p>Aluminium Door</p> <ul style="list-style-type: none">» Hinge door» Double glass» Thickness : 5/15" – 3/8" (8mm – 10mm)

EXTANZA 300

ANODIZATION

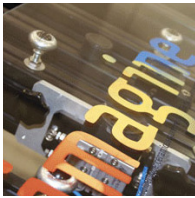


Black Anodized

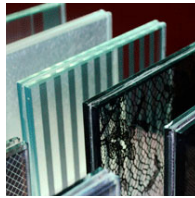


Clear Anodized

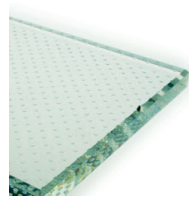
GLASS TYPE



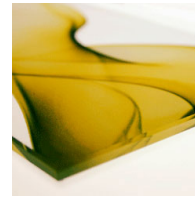
Digital printing



Laminated glass



Textured glass



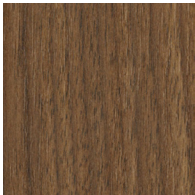
Tempered glass



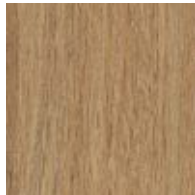
Tempered laminated glass

PANELS

Some of our colors



H67



H72



L204



L761



L202